



Volsara

(A Group company of Krystal Integrated Services Pvt. Ltd)

Leadership Model

- ◆ Director :- Ms. Saily Lad
- ◆ Educated in England with Professional degree in Business Strategy. She heads the Business and leads a team of technical professionals.

Project – Service offerings

1. Professional Services:-

- System Design and development
- Consulting
- Training

2. Project Services:-

- Project Management
- Testing & Commissioning



SITC Of Following Services

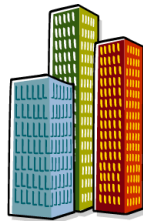
- CCTV Surveillance with Command & Control.
- Access Control with Time & Attendance Systems
- Fire Fighting, Sprinklers & Intelligent Addressable Fire Alarm Systems
- Building Management Systems
- Intrusion Alarm & Detection Systems
- Parametric Fencing Systems
- Parking Management & Guidance Systems
- PA & Voice Evacuation Systems
- Baggage Scanning & Entrance Control Systems
- Hand Held & Door Frame Metal Detectors
- Data & Networking
- Specialize in Security Systems & Intelligent Transport Systems (ITS)
- E-School



Addressable Markets

Monitoring process:
traffic monitoring, border control

Government buildings :
Museums and military bases



Transport :
Railways, airports and ports



Educational
institutions:
Distance learning,
Telemedicine



Public Security:
Police/Fire/Ambulance



Leisure and entertainment
areas :
Shopping Malls, Stadiums

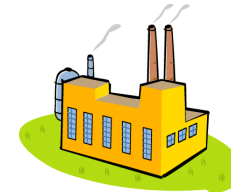


Volsara

Energy:
Oil & Gas, Utilities



Manufacturing:
Production line quality
management



Commercial units :
BANK, Retail outlets, Corporate
offices



Volsara

Integration of Security Systems

① Access Control



② Video Surveillance



③ Intrusion Detection



④ Detention Grade Equipment



⑤ Fire Detection Solutions



⑥ Physical Security Information Management



⑦ Off-site Monitoring



(Case Study – Kumbh Mela 2015 – Nashik, Maharashtra)



Our Esteemed Clients



Our OEM Partner



Honeywell



Infinova
The Integrator's Manufacturer

Panasonic



BOSCH

SIEMENS



HIKVISION



EasyIO

D-Link



Thank You



Volsara